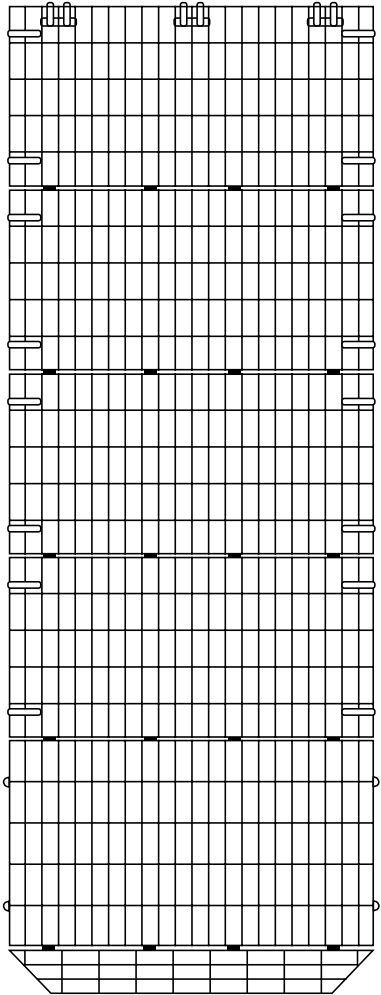
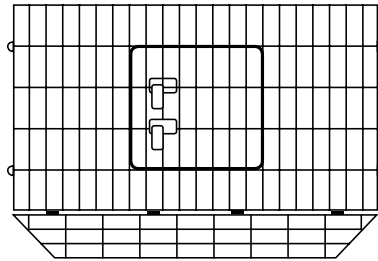


Aufbauanleitung für 82825 Gitterabstand vor Gebrauch für das jeweilige Kleintier prüfen!
Instruction de Montage 82825 Contrôler l'écart entre les grilles avant l'utilisation pour le petit animal !
Assembly Instructions of 82825 Check the distance between the bars for each animal before use.
Istruzioni per il montaggio di 82825 Prima dell'uso controllare la distanza delle barre per il rispettivo animale di piccola taglia!

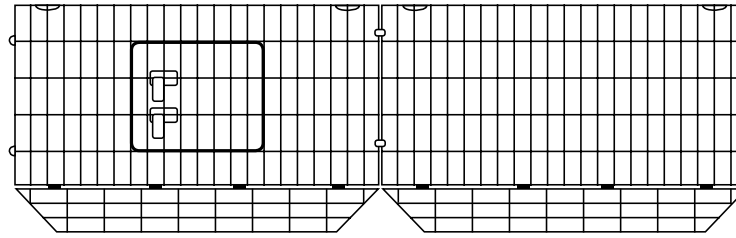
A 1x



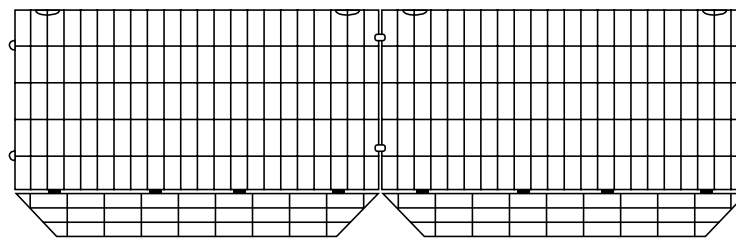
B 1x



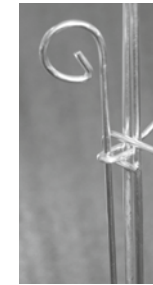
C 1x



D 1x



E 4x



F 6x



YouTube



<https://youtu.be/5wXFbUrCtpo>

